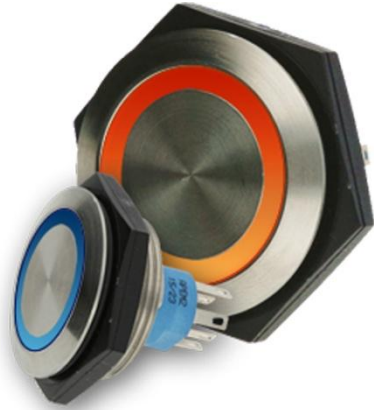

AV 30mm Series Security Pushbutton Switches



APEM expands its range of security switches with a new larger diameter model. The AV 30 mm pushbuttons are easy to operate due to their large actuation surface. The wider illuminated ring provides consistent backlighting, making them visible on the panel.

Customized marking, available on request, completes the design, making them a valuable solution to the consumer goods and access control markets.

Distinctive features:

Momentary NC/NO

- Illuminated ring, several colours available
- Robustness: IK06 (EN 62262)
- Panel sealing: IP67
- Operating temperature: -30°C / +85°C

Mechanical life: 1 million cycles

Datasheets and additional information can be found on www.apem.com