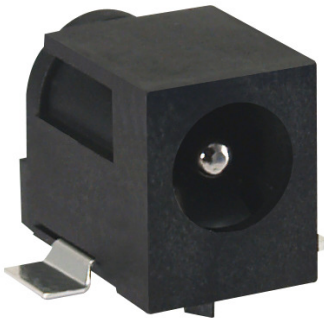




## **Kycon Adds Alternate Body Style to Surface Mount DC Power Jacks**



Kycon now offers an alternate body style to their surface mount DC Power Jacks line. The new KLDX-SMT3 incorporates Kycon's unrelenting durability and expertise in producing DC Power Jacks. The KLDX-SMT3 Surface Mount Power Jack provides designers with the functionality to accommodate a wider variety of board designs.

### **Key Specifications:**

- 2.0mm & 2.5mm pin diameter
- Built-in DC On/Off Switch
- RoHS and REACH Compliant

### **Part Numbers:**

- |                      |                           |
|----------------------|---------------------------|
| ▪ KLDX-SMT3-0202-ATR | 2.0mm centre pin diameter |
| ▪ KLDX-SMT3-0202-BTR | 2.5mm centre pin diameter |

Datasheets and additional information can be found on [www.kycon.com](http://www.kycon.com)